

How to set autopilot speed limit

Introduction

In order to ensure the safety, currently it is available to support users to set the maximum autopilot speed and the max speed allowed to enter the autopilot. It is also possible to set the level to manually disengage the autopilot.

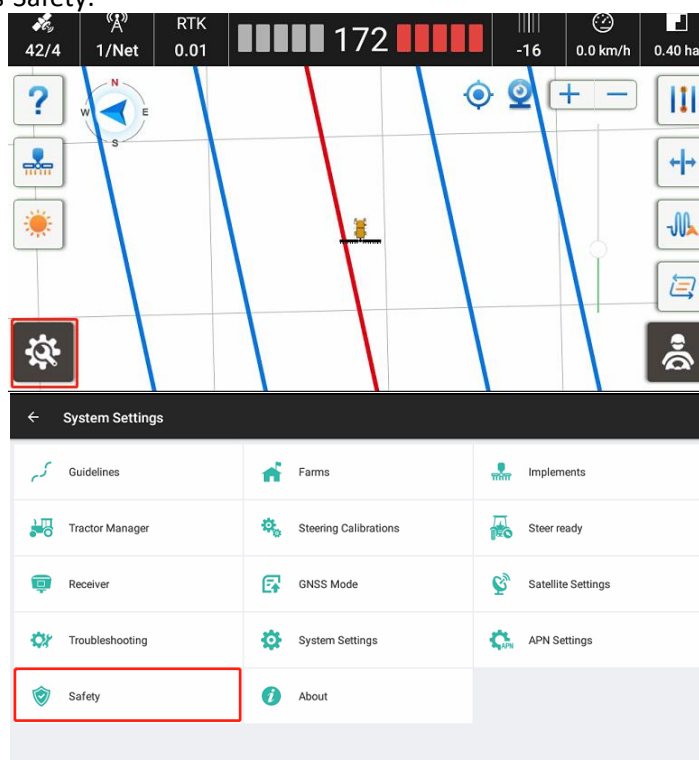
The default maximum autopilot speed is 16km/h and the configuration range is from 1km/h to infinity.

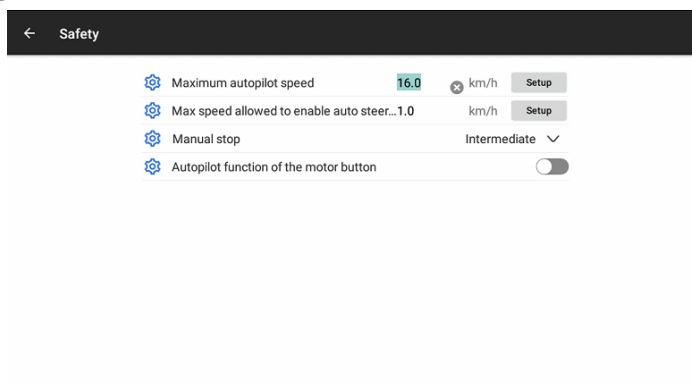
The default maximum speed allowed to enable autopilot is 12km/h and the configuration range is from 1km/h to infinity.

The maximum autopilot speed should be more than the maximum speed allowed to enable autopilot.

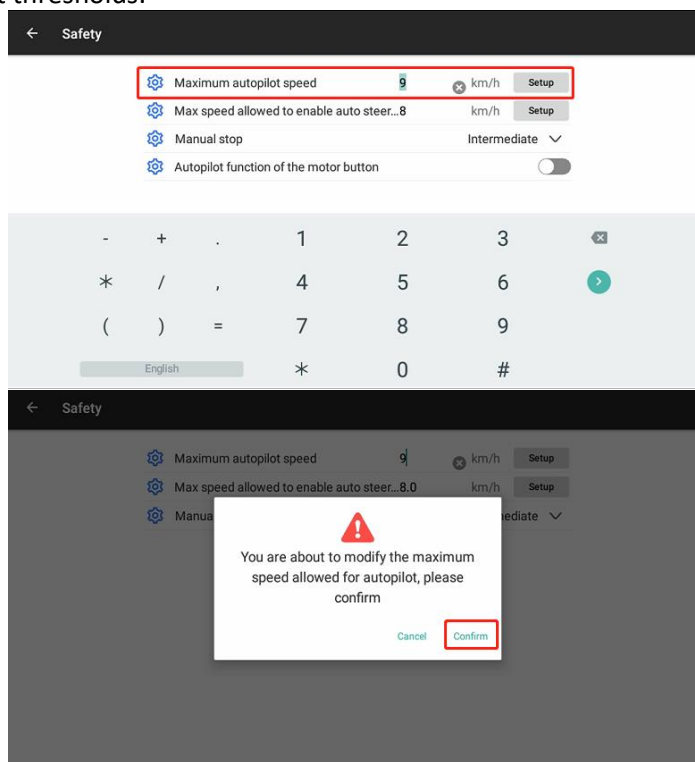
Steps

1. Go to Settings-Safety.

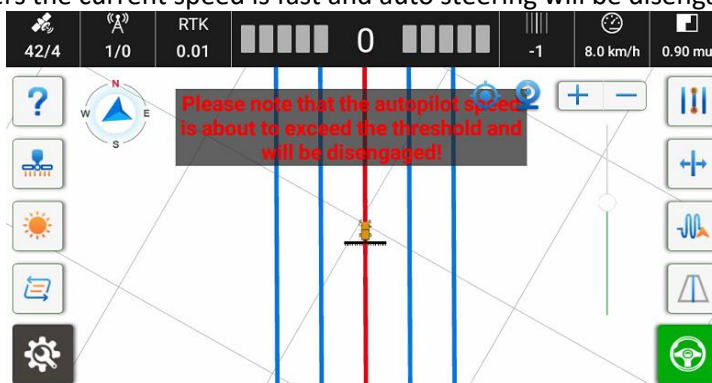




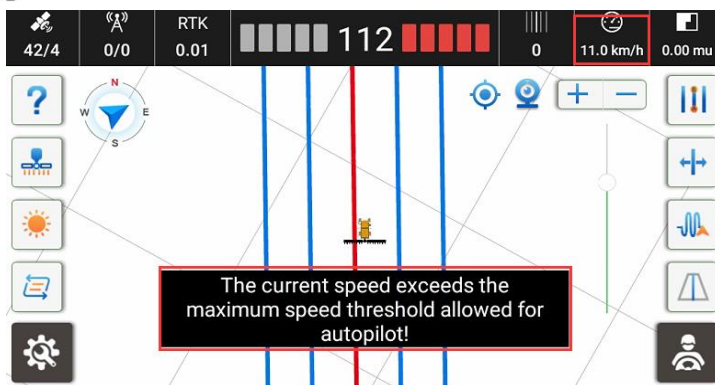
2. Set the maximum autopilot speed, when the vehicle in autopilot mode, it's speed cannot exceed the set thresholds.



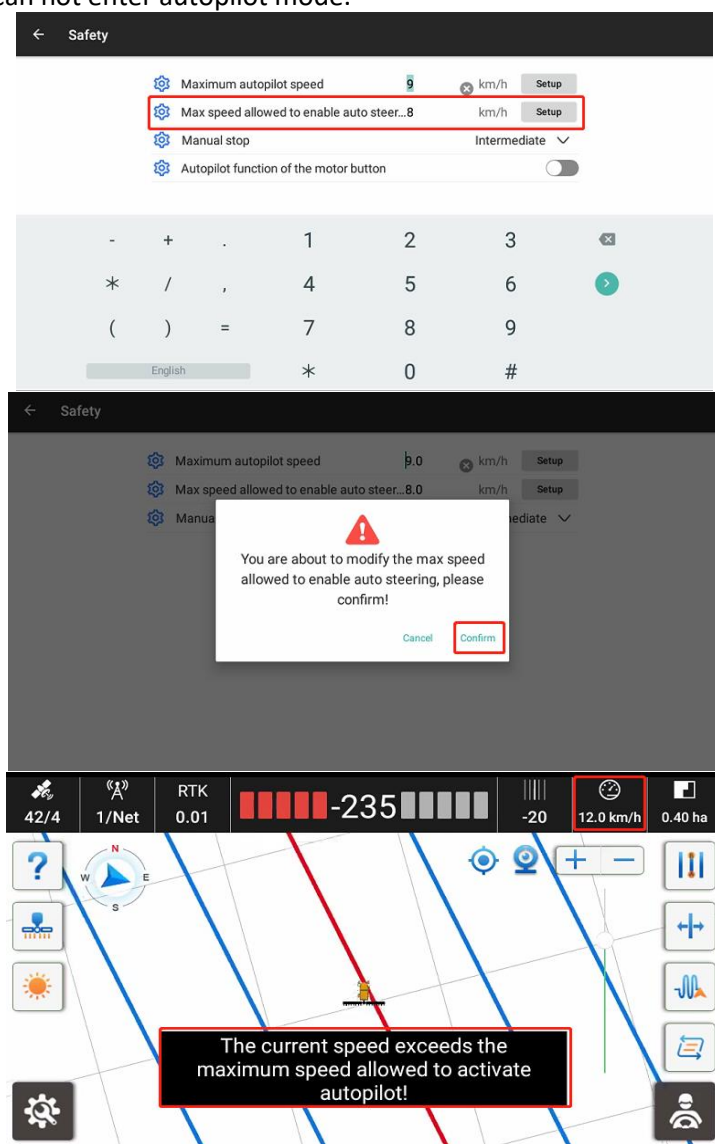
If the current speed is close to the threshold, it will have message prompts and audible alarms which remind users the current speed is fast and auto steering will be disengaged.



If the current speed exceeds the users set, the auto steering will be disengaged.

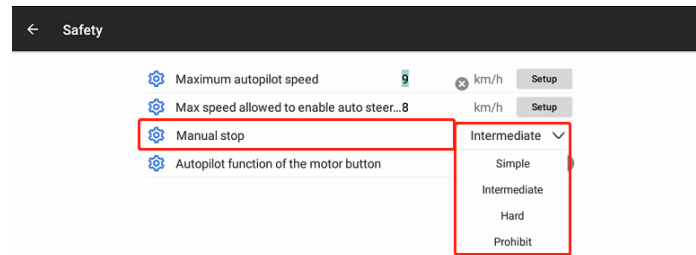


3. Set the max speed allowed to enter the autopilot, if the current speed exceeds the threshold, it can not enter autopilot mode.

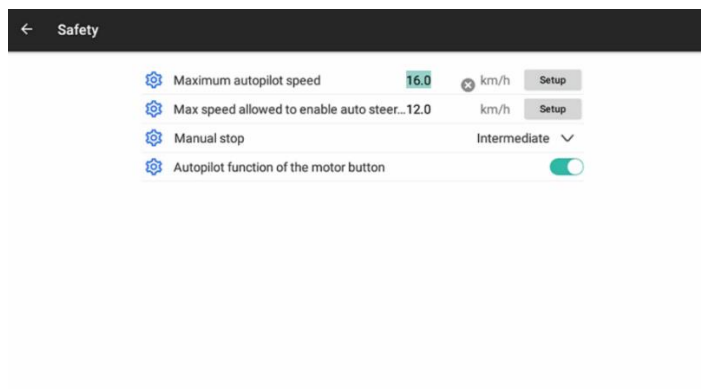




4. Set the level to manually disengage the autopilot. Manual stop function allows users to turn the steering wheel to disengage autopilot mode in an emergency.



5. Allow autopilot mode control via motor button. This feature is only allowed in fields. The default is on.





CHC Navigation

Building C, 577 Songying Road, Qingpu, District,
201702 Shanghai, China

Tel: +86 21 542 60 273 | Fax: +86 21 649 50 963

Email: sales@chcnav.com | support@chcnav.com

Skype: chc_support

Website: www.chcnav.com

Shanghai Huace Navigation Technology Ltd.
Building C, 577 Songying Road, Qingpu, District,
201702 Shanghai, China

WWW.CHCNAVCOM
Tel: +86 21 54260273
Stock Code:300627

